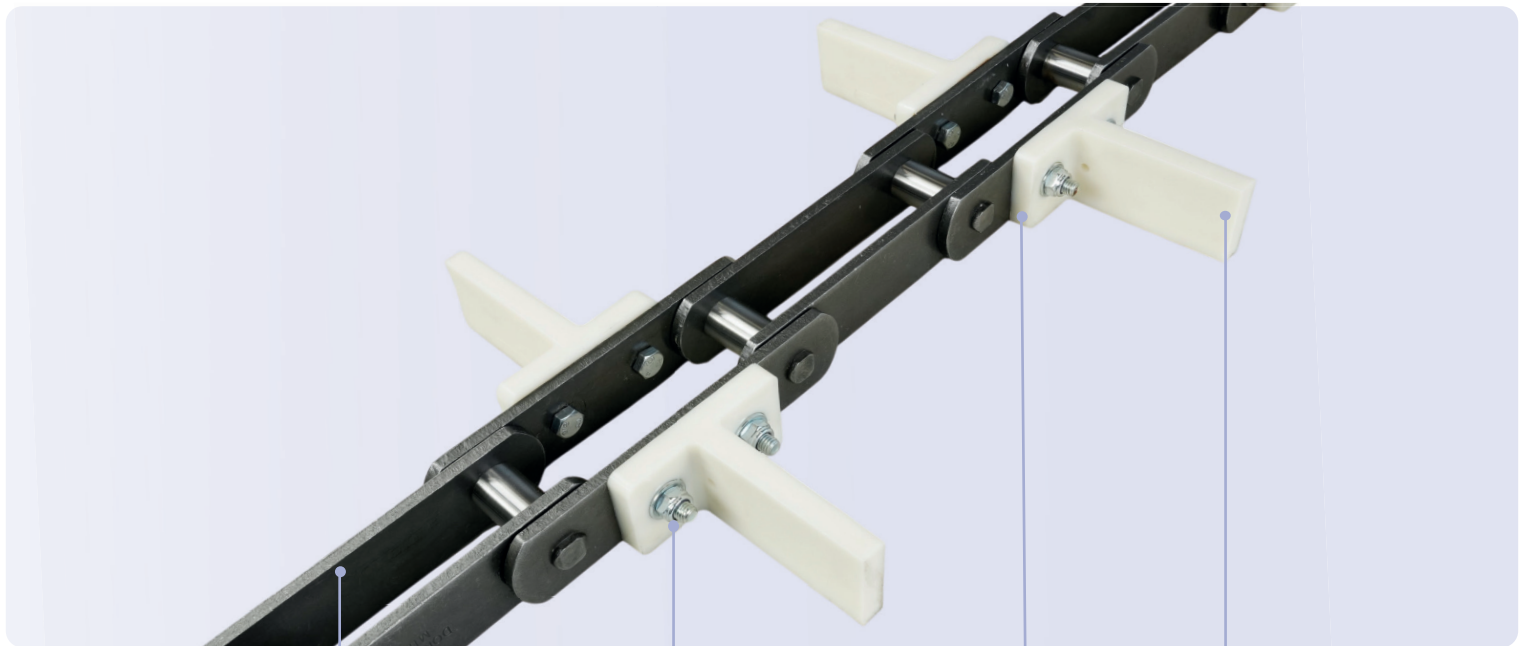


# Polyamide scraper conveyor chains

Handling granular, powdery, wet or dry products



Wide range of sizes

Quick replacement of scrapers

Low in weight with low friction coefficient

Polyamide scraper

## Polyamide scraper conveyor chains

The scraper chain is a high-performance conveying chain designed for modern industrial applications. It is specially suited for handling granular, powdery, wet or dry products, ensuring reliable material transport in a wide range of conditions.

With durable Polyamide scrapers and hardened chain components, it offers long service life and low maintenance. The Polyamide scrapers reduces noise and friction, resulting in smoother running and lower energy consumption. Quick scraper replacement further reduces downtime, making this scraper chain the ideal solution for efficient and dependable material handling.

### Technical highlights

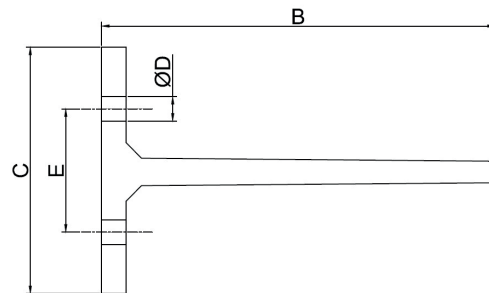
- High-quality chain types available: M-series and FV-series
- Long service life due to hardened chain components
- Scraper material: Polyamide
- Noise reduction enabled by Polyamide scrapers
- Low weight thanks to lightweight scrapers
- Low friction from Polyamide scrapers, resulting in reduced energy consumption
- Quick and easy scraper replacement
- Operating temperature range: -25°C to +75°C
- Conforming to ISO 1977, DIN 8165, and DIN 8167 standards

### Industries

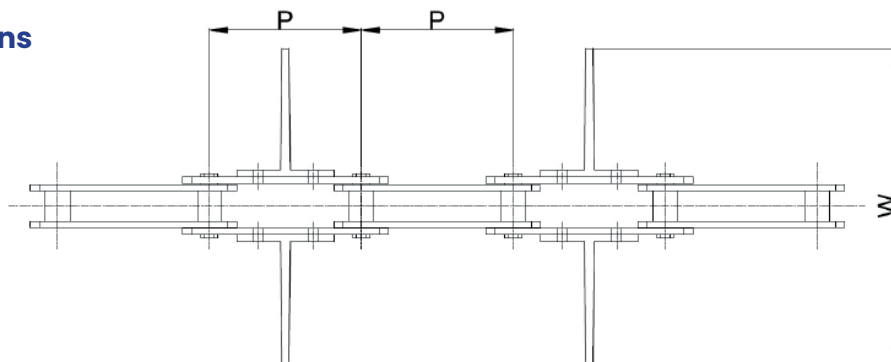
- Bulk Material Handling
  - Grains
  - Sugar
  - Flour
  - Powder ingredients
- Agriculture
  - Seeds handling
  - Feed handling
  - Grain handling

## Polyamide scrapers

Donghua scraper no.	Scraper height	Scraper length	Width	Diameter hole	Position hole
	A	B (max)	C	D	E
	mm	mm	mm	mm	mm
<b>FT40</b>	44	142	80	8,0	45,0
<b>FT50</b>	55	164	80	8,0	45,0
<b>FT60</b>	66	250	80	8,0	45,0
<b>FT70</b>	78	250	80	8,0	45,0



## Conveyor chains



Donghua Chain no.	Pitch							Width	Norm	Plate height	Tensile strength		Recommended scraper
	p										Acc. to ISO	Acc. to Donghua	
	mm										Min	F Average	
<b>M-serie</b>													
<b>M56</b>	63,0	80,0	100,0*	125,0*	160,0	200,0	250,0	324	DIN 8167	30,0	56,0	70,0	FT40
<b>M80</b>	80,0	100,0	125,0*	160,0	200,0	250,0	315,0	332	DIN 8167	36,0	80,0	100,0	FT40
<b>M112</b>	80,0	100,0	125,0*	160,0*	200,0	250,0	315,0	340	DIN 8167	40,0	112,0	140,0	FT40
<b>M160</b>	100,0	125,0*	160,0*	200,0	250,0	315,0	400,0	393	DIN 8167	50,0	160,0	200,0	FT50
<b>M224</b>	125,0	160,0*	200,0	250,0	315,0	400,0	500,0	575	DIN 8167	60,0	224,0	280,0	FT60
<b>M315</b>	160,0*	200,0	250,0	315,0	400,0	500,0	630,0	590	DIN 8167	70,0	315,0	393,7	FT70
<b>FV-serie</b>													
<b>FV63</b>	50,0	63,0	80,0	100,0	125,0*	160,0	-	322	DIN	30,0	63,0	75,0	FT40
<b>FV90</b>	63,0	80,0	100,0	125,0*	160,0	200,0	250,0	329	DIN	35,0	90,0	115,0	FT40
<b>FV112</b>	80,0	100,0	125,0*	160,0	200,0	250,0	-	338	DIN	40,0	112,0	170,0	FT40
<b>FV140</b>	63,0	100,0	125,0*	160,0*	200,0	250,0	-	387	DIN	45,0	140,0	180,0	FT50
<b>FV180</b>									DIN	50,0	180,0	250,0	FT50

\*Stock item

### Notes

- Quick delivery
- Assembled in the Netherlands
- Other scraper chains available on request

### Contact

+31(0)72 820 0120

info@donghua.eu

www.donghua.eu

