



A CUT ABOVE THE REST...

Donghua Limited has sold Timber Chain in the UK since its distribution centre opened in 2009. However, in direct response to customer demand, we have extended our UK stock-holding massively in 2015, providing an impressive and fully comprehensive product range with next day delivery.

Manufactured at Donghua's state-of-the-art production facilities in China, Timber Chain is assembled in the UK within our attachment chain workshop in the West Midlands.

Investment in the latest technologies & bespoke equipment includes: a chain length measuring machine accurate to within 10 microns per metre and capable of measuring up to five metres of chain, a fully automated pre-load machine, designed by Donghua, which eliminates the initial elongation typically found in in-house built attachment chains, a new rivet press that fastens attachments onto chain in a uniform manner improving accuracy & fatigue life and hot dip lubrication.

Attachment chains are often expected to perform in extraordinary and arduous applications where precise positioning of more than two chains in parallel is required, the chains need to be matched within a close tolerance of each other. Donghua's new measuring equipment matches chain to very close tolerances for correct tensioning to ensure that the attachment links engage with the sprockets together, thereby eliminating undue stress causing fatigue failures of the attachments.

Chains up to a length of 5 metres can be matched, and longer lengths can be supplied matched and tagged so that they can be fitted in sequence to maintain the high accuracy along the entire length required.

To complete our high performance chain assembly hot dip lubrication is available in-house as standard on all of our attachment chain; Donghua is the only chain manufacturer in the UK to have its own hot dip lubrication bath. Using different types of lubricant, subject to application, hot dipping allows penetration in to areas standard lube spraying does not reach. As the lubricant cools deposits remain inside the chain providing ultimate lubrication and ensuring chain is highly durable - 80% of chain wear is due to poor lubrication and maintenance making pre-use lubrication a crucial part of our build process.

Donghua Timber Chain is supplied in 5m lengths and includes all popular chain types from 3/4" to 2" pitch, in 2PEP - 5PEP Simplex and Duplex configurations.



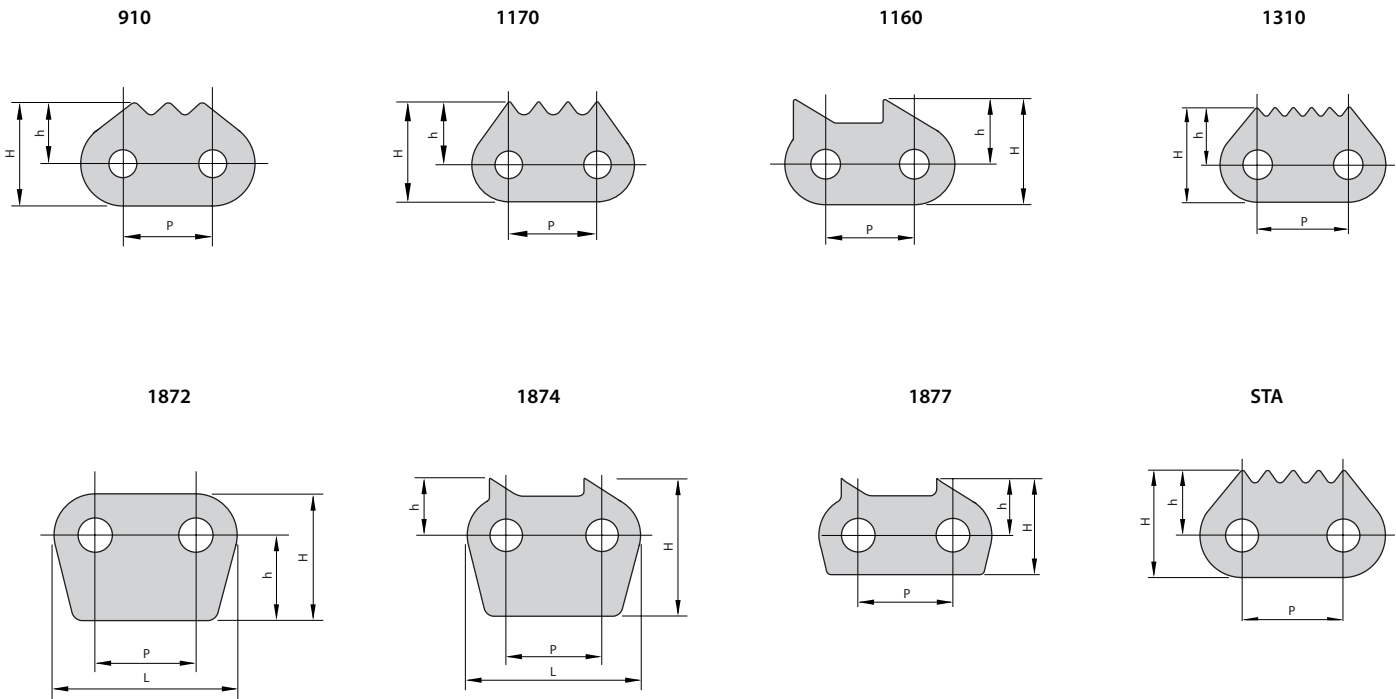
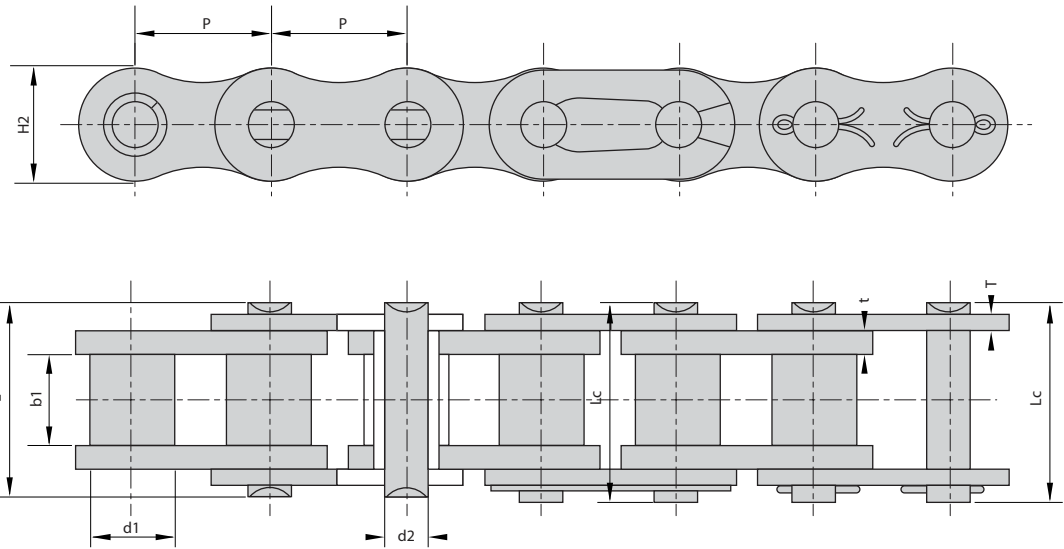
We only have one standard. THE BEST.

Donghua Limited
Unit 1, Sidings Close (off Wednesfield Way)
West Midlands WV11 3DR, UK
Phone: +44 (0)1902 866200
Fax: +44 (0)1902 722814
sales@donghua.co.uk
www.donghua.co.uk



TIMBER CHAIN

Donghua Sharp Top Chain - Popular Chain Types



CHAIN REFERENCE	p	d1	b1	d2	L	Lc	h2	t/T	H	h
	mm	mm	mm	mm	mm	mm	mm	mm	mm	mm
C60-1E2P/910	19.05	11.91	12.57	5.94	25.90	27.70	18.00	2.42	21.70	12.70
C60-2E2P/910	19.05	11.91	12.57	5.94	48.80	50.50	18.00	2.42	21.70	12.70
C12B-1E2P/910	19.05	12.07	11.68	5.72	22.50	24.20	16.00	1.85	21.70	13.70
C12B-2E2P/910	19.05	12.07	11.68	5.72	42.00	43.60	16.00	1.85	21.70	13.70

CHAIN REFERENCE	p	d1	b1	d2	L	Lc	h2	t/T	H	h
	mm	mm	mm	mm	mm	mm	mm	mm	mm	mm
C80-1E2P/1170	25.40	15.88	15.75	7.92	32.70	35.00	24.00	3.25	28.00	16.50
C80-1EP/1170	25.40	15.88	15.75	7.92	32.70	35.00	24.00	3.25	28.00	16.50
C80-2E2P/1170	25.40	15.88	15.75	7.92	62.70	64.30	24.00	3.25	28.00	16.50
C80-2EP/1170	25.40	15.88	15.75	7.92	62.70	64.30	24.00	3.25	28.00	16.50
C16B-1EP/1170	25.40	15.88	17.02	8.28	36.10	37.40	21.00	4.15/3.1	26.50	16.00
C16B-2EP/1170	25.40	15.88	17.02	8.28	68.00	69.30	21.00	4.15/3.1	26.50	16.00

CHAIN REFERENCE	p	d1	b1	d2	L	Lc	h2	t/T	H	h
	mm	mm	mm	mm	mm	mm	mm	mm	mm	mm
C80-1E2P/1160	25.40	15.88	15.75	7.92	32.70	35.00	24.00	3.25	29.50	18.00
C80-2E2P/1160	25.40	15.88	15.75	7.92	62.70	64.30	24.00	3.25	29.50	18.00

CHAIN REFERENCE	p	d1	b1	d2	L	Lc	h2	t/T	H	h
	mm	mm	mm	mm	mm	mm	mm	mm	mm	mm
C20B-1EP/1310	31.75	19.05	19.56	10.19	41.30	45.00	26.40	4.5/3.5	33.00	19.80
C20B-2EP/1310	31.75	19.05	19.56	10.19	77.80	81.50	26.40	4.5/3.5	33.00	19.80

CHAIN REFERENCE	p	d1	b1	d2	L	Lc	h2	t/T	H	h
	mm	mm	mm	mm	mm	mm	mm	mm	mm	mm
32B-1EP/1872/1874	50.80	29.21	33.00	17.81	66.00	71.00	64.00	7.00	73.00	30.00
32B-1E2P/1874	50.80	29.21	30.99	17.81	66.00	71.00	42.00	6.0/7.0	73.00	30.00
32B-1E2P/1877	50.50	29.21	30.99	17.81	66.00	71.00	42.00	6.0/7.0	51.00	30.00
32B-1NE2P/1874	50.80	29.21	17.02	17.81	66.00	71.00	42.00	6.0/7.0	73.00	30.00

CHAIN REFERENCE	p	d1	b1	d2	L	Lc	h2	t/T	H	h
	mm	mm	mm	mm	mm	mm	mm	mm	mm	mm
C120-1EP/STA	38.10	22.23	25.22	11.10	50.30	54.30	35.70	4.80	38.50	21.00

Available from 3/4" to 2" pitch, in 2PEP - 5PEP Simplex & Duplex configurations

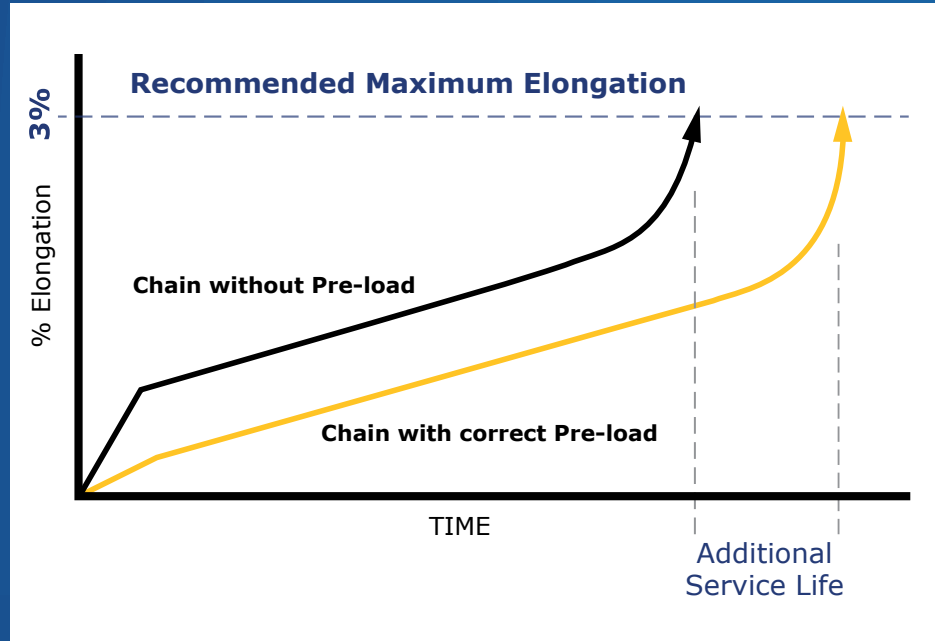
PRE-LOAD

After assembly, Donghua applies an initial load to its chains, called 'pre-load'.

Pre-loading is applied as a final alignment of the various chain components, pins, link-plates and bushings, and helps to eliminate the initial elongation often found in adapted roller chain attachment chains, increasing the usable service and fatigue life of the chain.

Donghua pre-loads to approximately the maximum recommended service load and is achieved either statically or dynamically.

The chart below illustrates the benefits of pre-loading by gaining additional service life. Chain that has little or no pre-load applied will experience a significant amount of elongation during initial start-up of the drive before levelling off. The chain will then elongate at a steady rate until the case hardness on the wearing components is gone and the chain experiences rapid elongation. Donghua chain that has been properly pre-loaded experiences very little elongation during initial start-up, which ultimately results in extended service life.



C120-1EP/STA



C80-1E2P/1160



32B-1E2P/1877